

BOONE RIVER WATERSHED PLAN PROJECT OVERVIEW

The Plan Purpose

The Boone River Watershed Management Plan is sponsored by Boone River Watershed Management Authority (WMA), which is a voluntary coalition of local counties, cities, and soil and water conservation districts (SWCD) within the watershed. The plan identifies and prioritizes projects and activities to address water quality and flooding concerns across the watershed. Implementation of the plan is based on voluntary cooperation between WMA members, landowners, and other stakeholders.

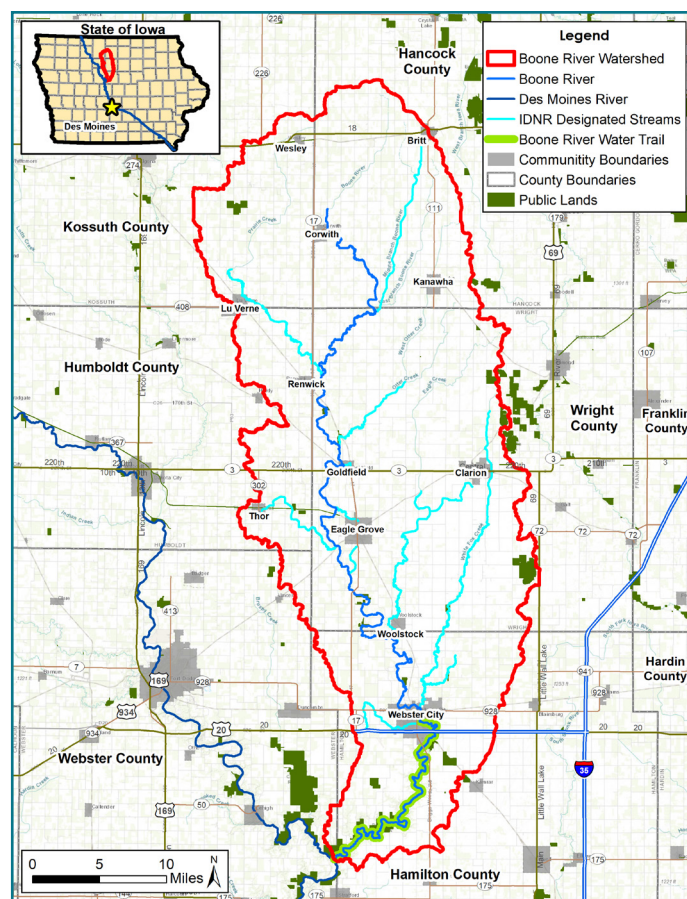
The Plan Vision

The WMA will be a local voice in existing and new watershed efforts through community, county, state, federal, and private partnerships to improve water quality and increase flood resiliency across the watershed. This will be achieved through facilitation of education, outreach, and implementation of practices which are voluntary, compatible with agriculture, economically viable, environmentally sound, and that improve soil health, as well as enhance recreation and wildlife habitat.

Established Goals

- 1 Ensure water quality is adequate for all uses, both within the watershed and downstream, by meeting state water quality standards and goals.
- 2 Reduce flood risks and improve wildlife habitat within the watershed.
- 3 Build an aware and engaged community that works towards improving watershed management.

The Boone River Watershed Area



Primary Concerns to the Boone River Watershed Area

- » High Nitrogen Levels
- » Flooding
- » High Phosphorous Levels
- » Wildlife Habitat
- » High Levels of Bacteria
- » Recreation
- » Stream & Field Erosion

Short-Term Action Plan

The action plan identifies priority activities that each city, county, and SWCD, along with the WMA should take over the next 5 years. The short-term action plan has been developed around a framework of four categories of activities which include Education, Projects and Studies, Partnerships and Policy, and Monitoring and Plan Evaluation. Each of these categories contain recommended actions that help to address the objectives identified in the Boone River Watershed Plan goals.



Education

Outreach, education, or technical assistance aimed at various target audiences that helps to increase awareness of the WMA, the watershed plan, or assists in the increased adoption of BMPs.

Projects & Studies

A standalone or specific effort meant to produce a product, tool, report, or achieve a tangible result.

Partnerships & Policy

Collaboration between WMA members or other partners and the resulting actions, guidelines, or protocols set forth to achieve a specific outcome.

Monitoring & Plan Evaluation

Efforts to collect, manage, and utilize data over time to track progress of meeting watershed plan goals.

Long-Term Implementation Strategy

This 20-year plan will take education and buy-in of landowners, farmers, and communities, plus grants and other funds to help make it a reality. An overarching strategy has been developed to guide this ambitious project. To ensure strategies continue to be assessed and reviewed, the WMA will update this plan every five years.

Key Strategies for Long-Term Implementation

- » Voluntary Adoption of BMPs
- » Compatibility with Agriculture
- » Phased Implementation
- » Identification of Priorities
- » Whole Farm Conservation
- » Policies for Sustainable Communities
- » Flood Resiliency

Education Plan

Education and outreach refer to the on-going process of informing and involving the watershed's population in the development and implementation of the watershed plan. This process is essential as the success of the watershed plan is dependent on the voluntary efforts of the watershed's communities, landowners, residents, and other stakeholders.

Key Strategies for Education and Outreach

1. Utilize messaging from the Whole Farm Conservation Manual.
2. Provide farmers and landowners with information on the economics of conservation.
3. Implement lessons learned from the Lyons Creek Watershed Improvement Project.
4. Utilize water trails to create a sense of place and leverage opportunities for educational outlets.
5. Utilize ACPF mapping to prioritize outreach to critical source areas.
6. Leverage virtual technology to expand outreach efforts.

Next Steps

Public comment on the draft Boone River Watershed Plan is open until March 2, 2022. All residents, landowners, and farmers within the Boone River Watershed are invited to offer feedback about the contents of the plan prior to this date. The final version of the plan will be adopted at the next regular Boone River WMA board meeting in Spring-Summer 2022.

For more information or to share feedback, contact the WMA or planning team.

CONTACT INFO

Dean Kluss, Wright County Supervisor
WMA Board Chairperson
dkluss@co.wright.ia.us